



51

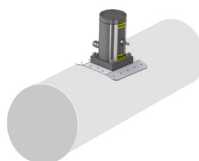
## Glueing Console Series NKK



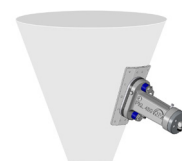
- Alternative to welding
- Innovative joining technique
- Stable and tested bonding
- Simple mounting
- Easy to clean
- Especially suitable for stainless steel constructions



NKK G



NKK R



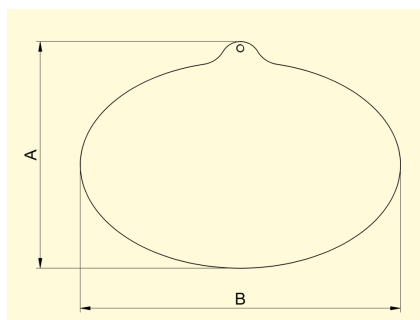
NKK K



## Glueing Console Series NKK

| Type*     | Usable vibrators and impactors** |        |                                |     |                    |                                 |              |                                    |                |       | Dimensions                          |           |
|-----------|----------------------------------|--------|--------------------------------|-----|--------------------|---------------------------------|--------------|------------------------------------|----------------|-------|-------------------------------------|-----------|
|           | NCB                              | NCR    | NCT                            | NTP | NTS                | NTK                             | PKL          | NEA<br>NEG                         | NEA S<br>NEG S | NED   | A<br>[mm]                           | B<br>[mm] |
| NKK G 010 |                                  |        |                                | 18  | 80                 |                                 |              |                                    |                |       | 49                                  | 70        |
| NKK G 050 | 1, 2                             | 3      | 1, 2, 3<br>4, 4i               |     | 120, 180           | 8 AL                            |              |                                    |                |       | 79                                  | 100       |
| NKK G 100 | 3, 5,<br>10, 20                  | 10     | 5, 10, 10i                     | 25  | 250, 350<br>100/01 | 15 X, 16<br>18 AL               | 190          |                                    |                |       | 109                                 | 140       |
| NKK G 200 | 50, 70                           | 22, 57 | 15, 29<br>29i, 55<br>108, 108i | 32  | 75/01<br>50/01     | 25, 25 AL<br>28 AL<br>40, 40 AL | 450          | 504                                |                |       | 129                                 | 220       |
| NKK G 300 |                                  |        |                                | 48  | 70/02<br>54/02     |                                 | 740,<br>1000 | 5020, 5050<br>5060, 50120<br>50200 | 5020<br>5050   | 50100 | 170                                 | 240       |
| NKK G 400 |                                  |        |                                |     | 50/04<br>21/04     |                                 | 2100         | 50300                              | 50120          | 50200 | 210                                 | 290       |
| NKK G 500 |                                  |        |                                |     |                    |                                 | 5000         |                                    |                |       | 230                                 | 320       |
| NKK R     | for cylindrical component shape  |        |                                |     |                    |                                 |              |                                    |                |       | Dimensions are<br>customer-specific |           |
| NKK K     | für conical component shape      |        |                                |     |                    |                                 |              |                                    |                |       |                                     |           |

\* G = suitable for flat component shape, R = suitable for round component shape, K = suitable for conical component shape  
 \*\* For each glueing console only one vibrator or impactor is usable. Multiple assembly not possible.



Dimensions NKK G



NCR on NKK G for deaerating fluids



PKL on NKK K for loosening adhesions

### Application areas

The alternative to welding: With glueing console of the series NKK vibrators and impactors can be easily and securely attached to steel or stainless steel components such as containers, silos, pipes or other assemblies. Impactors and vibrators are also applied for cleaning, loosening or emptying. The innovative joining technique „glueing“ does not require any heat input and therefore does not form cracks or fractures. Thus, this gentle process guarantees material integrity.

### Design and function

The glueing console of the series NKK can be mounted very easily and during ongoing production. All parts needed for glueing are available as a set. The console serves as a connecting element between vibrator and construction. After pre-cleaning of the surfaces to be glued, the glueing console can be attached. After a curing time of twelve hours, vibrators or impactors can be mounted and the console fully loaded.

### Features

Glueing consoles are particularly suitable for use in the food industry. They are easy to clean. Console and glued joint can be subsequently painted after completion of assembly. In addition, consoles are available for ATEX areas. Talk to our application experts - also on site - which vibrator or impactor is suitable for your operational processes. We are happy to construct a tailor-made console type for your component form and will assist and support you during installation.

### Ambient temperature

Installation: +15 °C to +40 °C  
 Operation: -20 °C to +100 °C

**NetterVibration** offers the right accessories required for the mounting, installation and control of vibrators and interval impactors.

**Netter provides solutions.**  
**Consult our experienced application technicians.**

### Netter GmbH

Fritz-Lenges-Str. 3  
 55252 Mainz-Kastel

- Germany
- Switzerland
- Poland
- Spain
- Australia
- United Kingdom

www.**NetterVibration**.com  
 info@**NetterVibration**.com